

OAKWOOD WEST ESTATE

Sustainable Timber and Cladding

- 1 & 6 – Scots Pine and Douglas Fir timber stacks
- 2 – Lewis measuring the timber for milling
- 3 – ‘The Woodyard’ our large timber barn and office (under construction)
- 4 – A forwarder extracting the timber
- 5 – Milled cedar cladding boards
- 7 – Mobile Sawmill operated by Will Wallace of Woodlouse Industries



OAKWOOD WEST ESTATE

Recent Projects Using Our Timber

1 & 6 – Fern Lodge, West Ashling

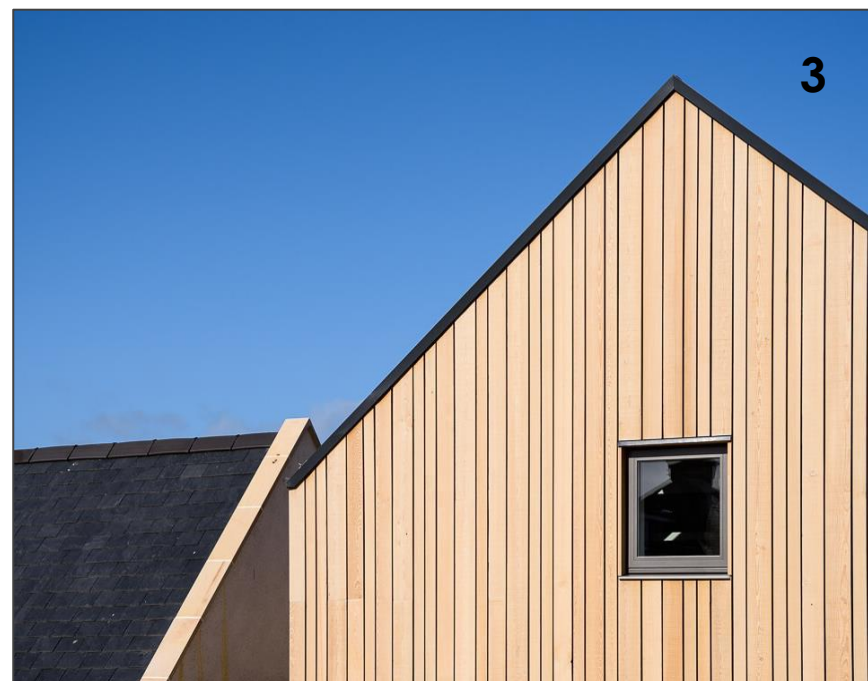
3 & 5 – Brent Lodge Wildlife Admissions Building,
Sidlesham

2 & 4 – Meadow Hide, West Ashling

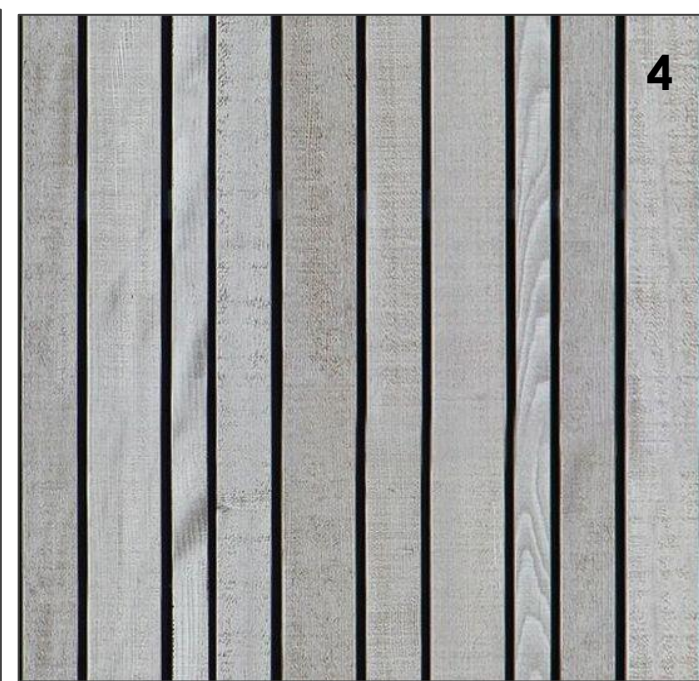




1



3



4



2



5



6

OAKWOOD WEST ESTATE

Cladding Options

- 1 & 2 – Hit and Miss Cladding
- 3 & 4 – Random width vertical new and weathered
- 5 – Horizontal boarding
- 6 – Weatherboarding

